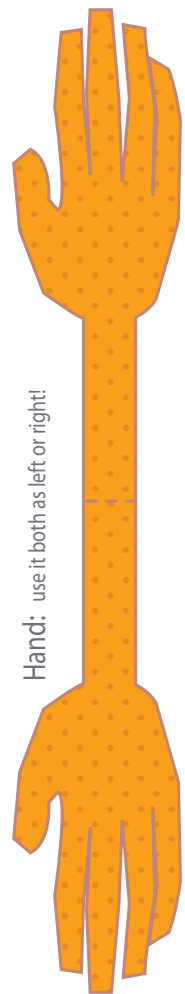
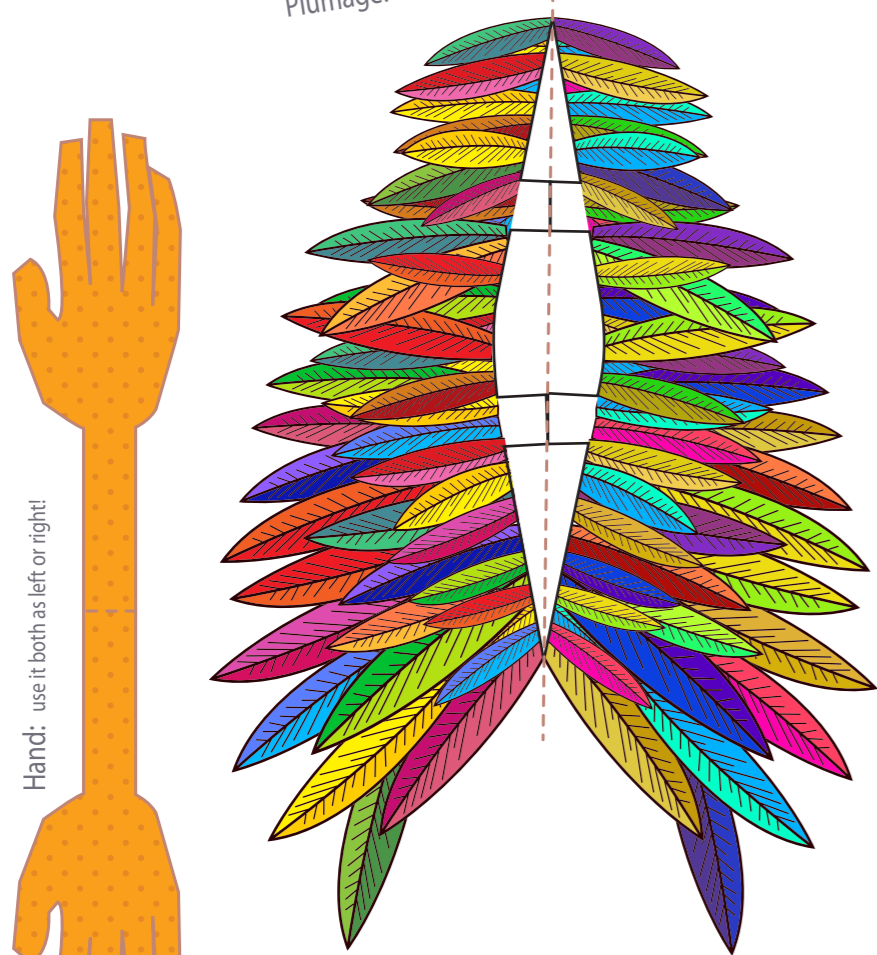
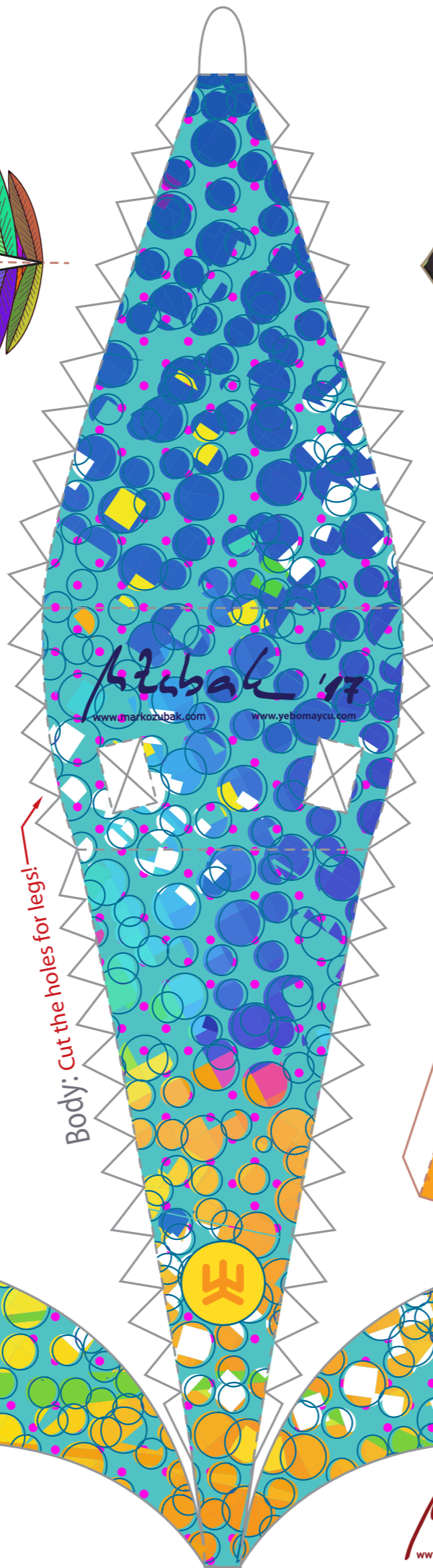


Plumage: use it both as left or right! First fold and glue, then cut.



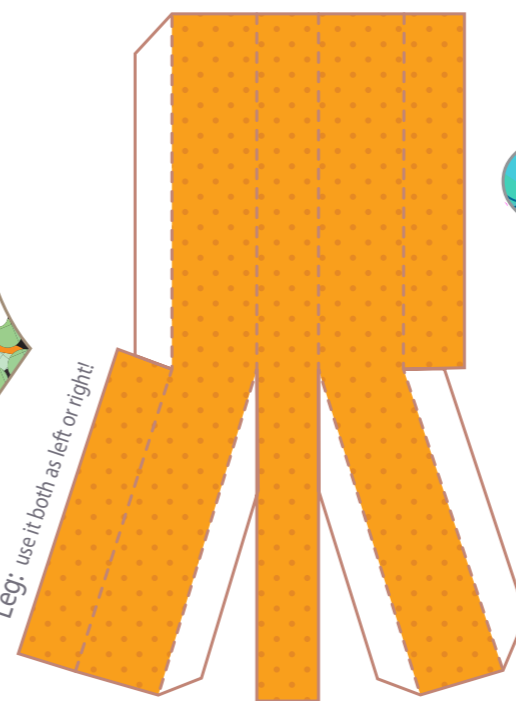
Hand: use it both as left or right!



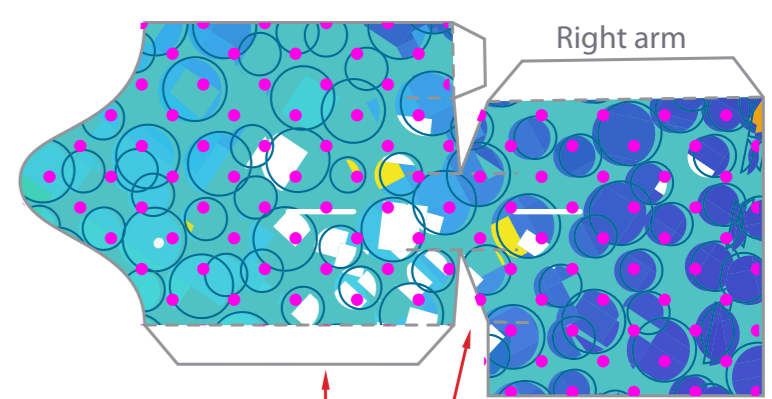
Body: Cut the holes for legs!



Shoes: use it both as left or right!

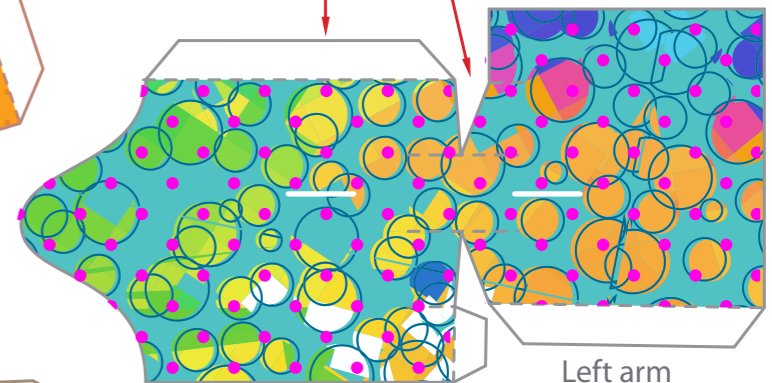


Leg: use it both as left or right!

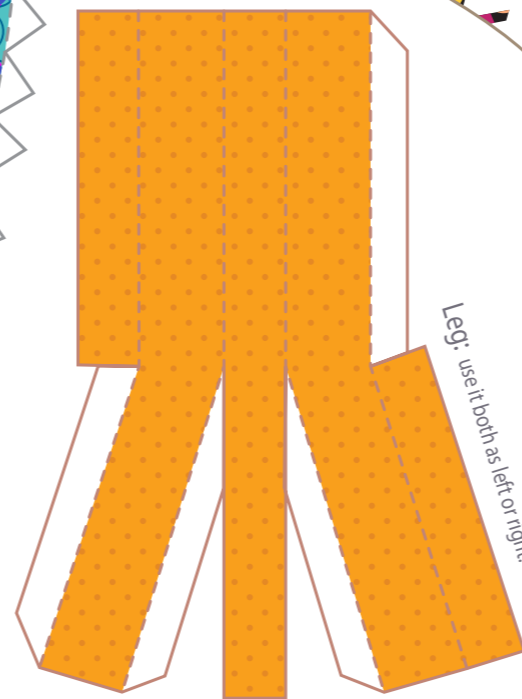


Right arm

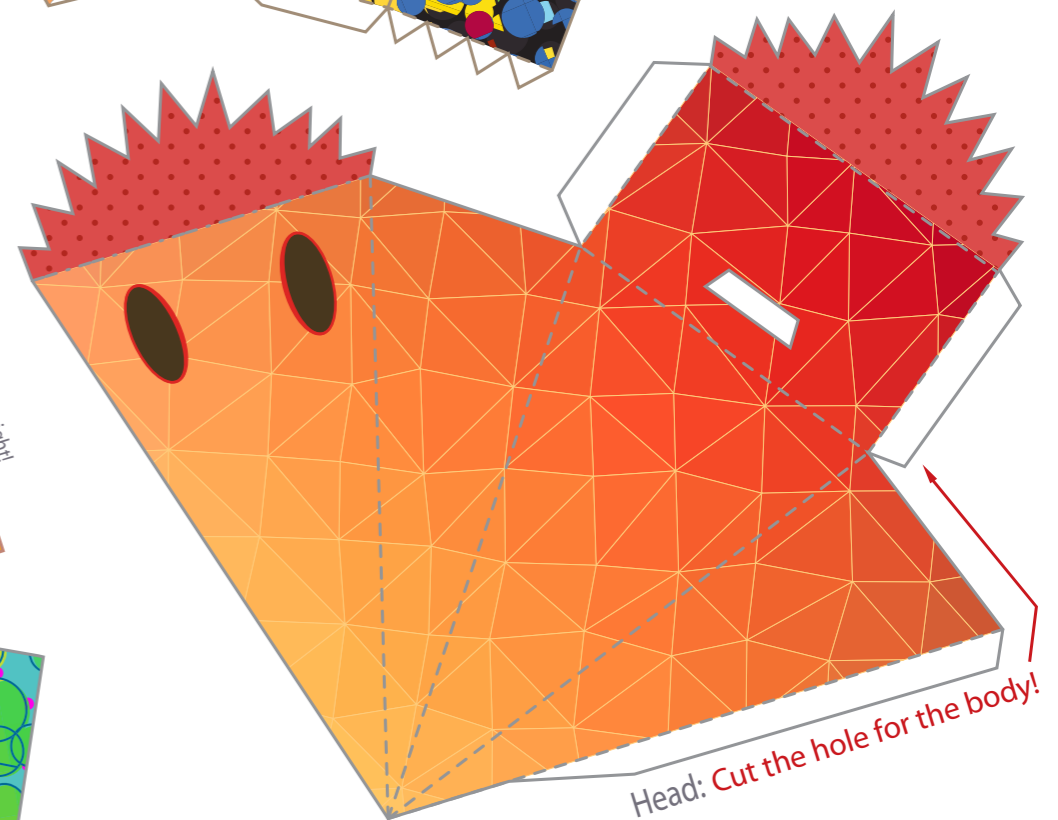
Cut the holes for wings!



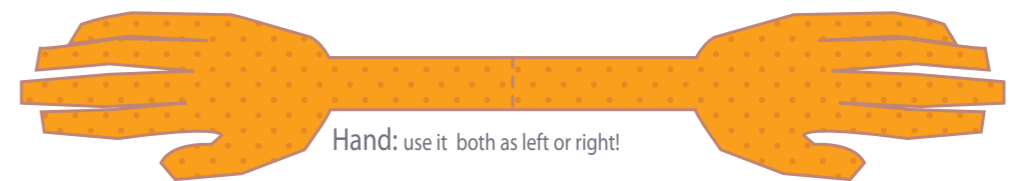
Left arm



Leg: use it both as left or right!



Head: Cut the hole for the body!



Hand: use it both as left or right!

